



King Lake

Emporia State University



History of King Lake

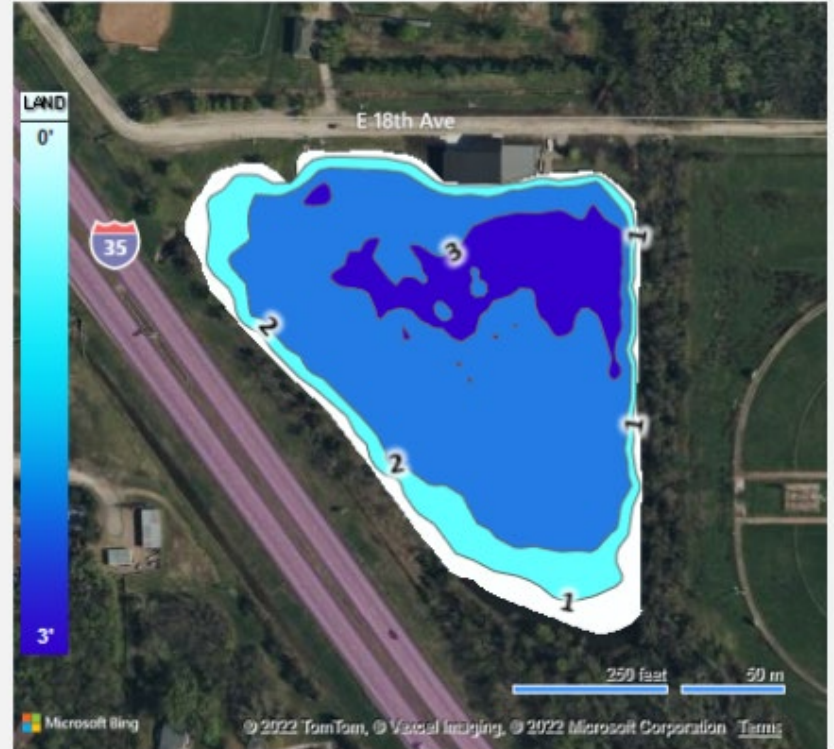
King Lake is a small body of water located south of the Emporia State University campus. Sitting on stilts on the shore of the lake is the relatively new Prophet Aquatic Research and Outreach Center, or PAROC for short. It was built for the use of ESU students and faculty, and also to educate the public about aquatic-related information. As of April 2022, fishing is open to the public on the lake thanks to a partnership between ESU and the Kansas Department of Wildlife and Parks.

About King Lake

Limnological Parameters

| | |
|--|------|
| Parameter Size Multipurpose Pool (acres) | 9.5 |
| Maximum Depth (ft) | 5.0 |
| Mean Depth (in) | 2.5 |
| Mean Annual Precip (in) | 36.8 |
| Secchi (cm) | 5.0 |

Bathymetric Contour Map



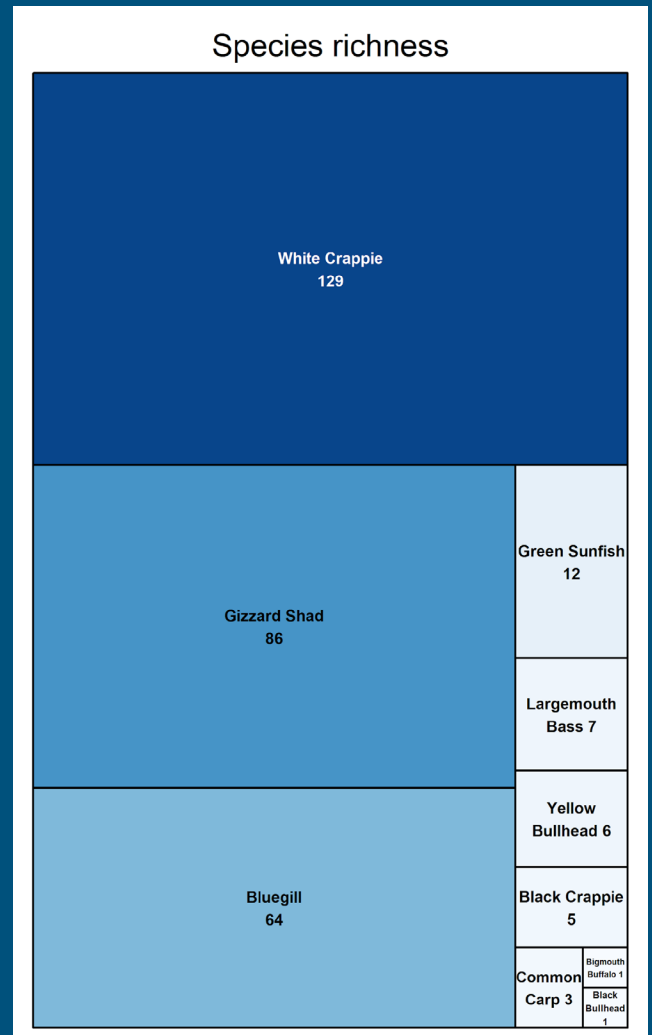
Fish in King Lake

Game Fish

- Largemouth Bass
- Spotted Bass
- White Crappie
- Black Crappie
- Bluegill
- Green Sunfish
- Orange Spotted Sunfish
- Channel Catfish
- Freshwater Drum
- Rainbow Trout

Non-Game Fish

- Black Bullhead Catfish
- Yellow Bullhead Catfish
- Gar
- Common Carp
- Bigmouth Buffalo
- Gizzard Shad
- Brook Silverside
- Mosquito Fish



Fishing Regulations and More Information

PERMIT REQUIREMENTS

- Fishing license from KDWP is required throughout the year with the same requirements as other publicly accessible fisheries (<https://ksoutdoors.com/Fishing/Fishing-Regulations>)
- Trout permit from KDWP will be required for all anglers, regardless of age exemption, (i.e., anglers < 16 years old and >74 years old will need trout permit) from January 1 to April 15, 2023. This is required of all anglers regardless of whether they are targeting trout. KDWP will provide signage for this.
- In subsequent years, a trout permit will be required for all anglers from November 1 to April 15 assuming King Lake remains enrolled in KDWP's trout program.
- Trout permits are available to purchase online, through the GoOutdoorsKS app, across the interstate at the KDWP building (1830 Merchant St), or at any authorized KDWP license vendor.

HARVEST REGULATIONS

- Black and White Crappie (combined): 50/day, no minimum length limit.
- Channel Catfish: 10/day, no minimum length limit.
- Largemouth Bass: 5/day, 15 inch minimum length limit (must be 15 inches or greater to keep).
- Rainbow Trout: Anglers in possession of a trout permit may harvest 5/day with no minimum length limit.

Other species (Bluegill, Black and Yellow Bullhead, Common Carp, Gizzard Shad, Bigmouth and Smallmouth Buffalo, etc.) do not have daily or length limits

Management Suggestions for King Lake

- a. Dredge the bottom of the lake to customize and increase variability and depth. This action could enhance a more diverse and suitable habitat for fish
- b. Increase plant diversity by adding native macrophytes to increase secondary producers and increase variation.
- c. Increase fish habitat diversity in King Lake by adding structures for fish to utilize for habitat, safety, and spawning.
- d. Improve oxygen levels in King Lake by potentially adding a fountain to increase oxygen and force out excess CO₂, which could lead to fewer fish kills in the summer.

Future plans

- Boardwalk and accessible path around the entire lake
- Dredging to add depth to the lake
- Addition of a fountain to help with aeration
- Creation of a sandy beach, for recreation and fish spawning habitat
- Improved boat ramp
- Sign and information kiosk and fish cleaning station
- Planting native bamboo (giant river cane) to block sound from the interstate

